



CHALET WITH POOL - OPEN VIEW · SAINT-MARTIN-DE-BELLEVILLE



CHALET WITH POOL - OPEN VIEW



3 450 000€

Recover the VAT of your investment. Please contact us to request the VAT amount.

Fees charged to seller

Non-contractual document.

The information illustrating the advertisements relating to the properties and their surroundings (descriptions, photographs, surface areas, points of interest, etc.) is provided for information purposes only, without any guarantee of completeness or accuracy.

Réf : 2997-1

New development of two chalets located in a charming hamlet called Villarabout. This hamlet has an exceptional view of the valley and its opposite side, an ideal south / south-west exposure allowing to take advantage of the outside spaces in all seasons. Only 4 minutes by car from the famous village of Saint-Martin-de-Belleville, you will have access to all the amenities and activities essential to a perfectly successful stay.

This chalet, of about 330 sq.m - located in a very intimate area and with very well thought volumes - is composed of 5 double ensuite bedrooms, many services such as: sauna, cinema room, ski room... as well as a kitchen opened on an architectural living room with fireplace.

The outdoor spaces allow you to contemplate the surrounding mountains while enjoying the comfort of a modern chalet.



330m²



6



6

LEVEL 0

- △ Entrance
- △ Ski Room
- △ Storage room
- △ Wine cellar with glass

- WC

LEVEL 1

- △ Three double ensuite bedrooms

LEVEL 2

- △ Laundry room
- △ Cinema room
- △ Large living room with kitchen
- △ Living room under the roof
- △ Fireplace
- △ Large outside terrace

LEVEL 3

- △ Two double ensuite bedrooms
- △ Sauna
- △ Master bathroom

LEVEL 4

- △ Large Master suite with dressing



KEY POINTS

- △ Top of the range
- △ Surface area
- △ Location

AMENITIES



Balcony



Cellar



Fireplace



Terrace



Sauna



Ski room

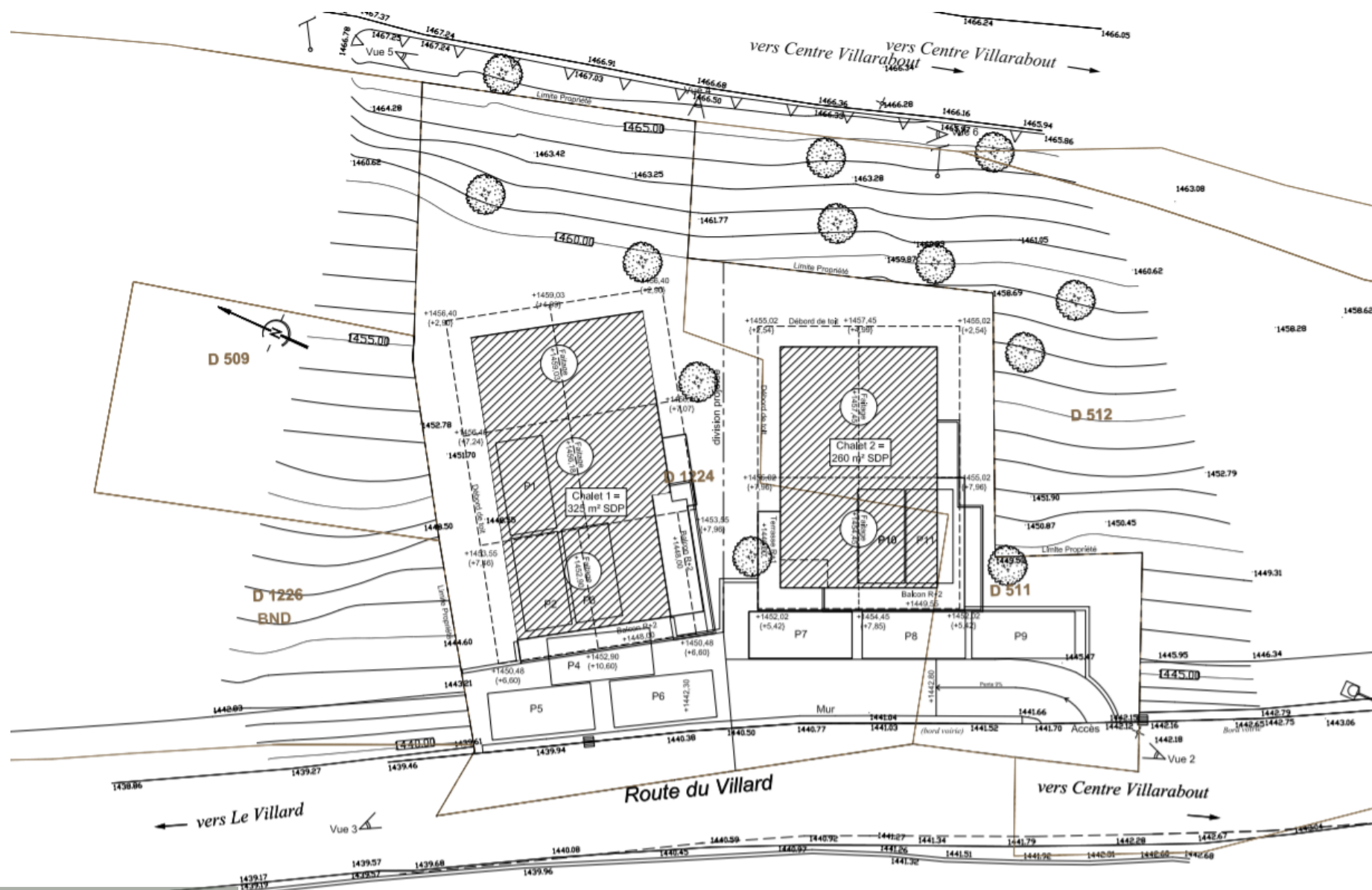


Home cinema



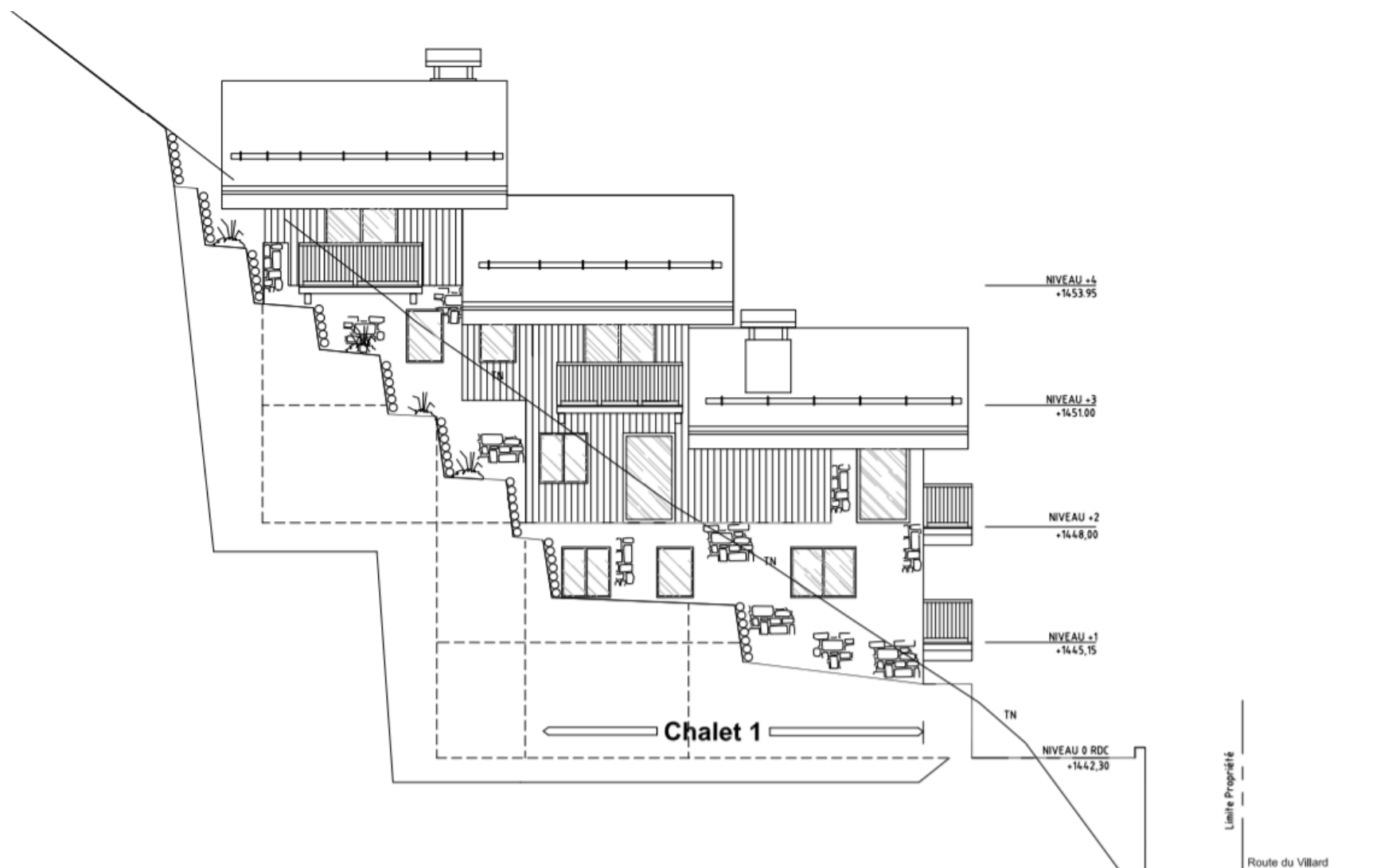
LOCATION

MASSE



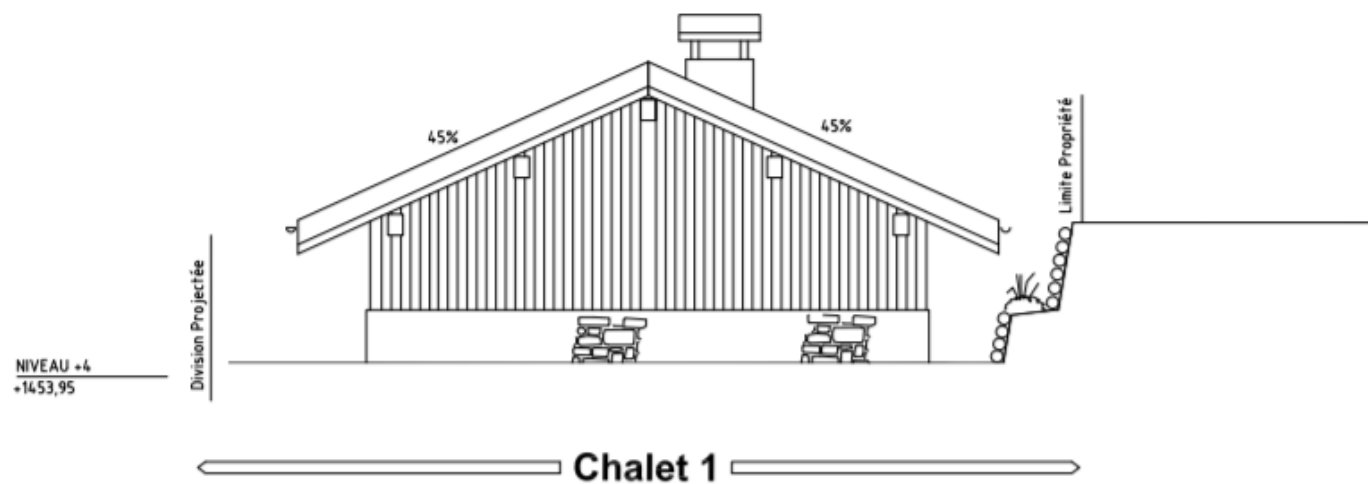
PLAN

FACADE NORTH



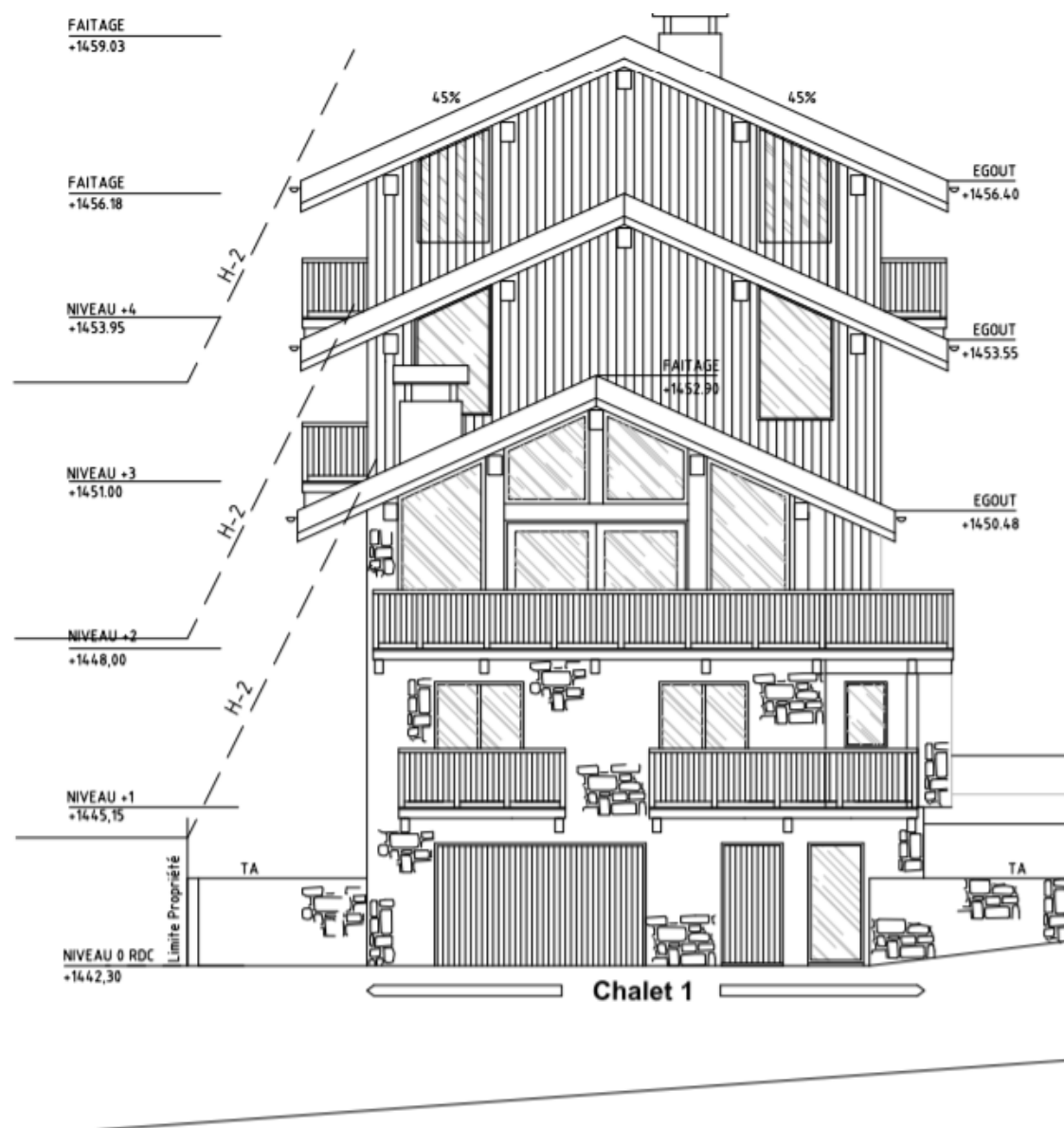
PLAN

FACADE EAST



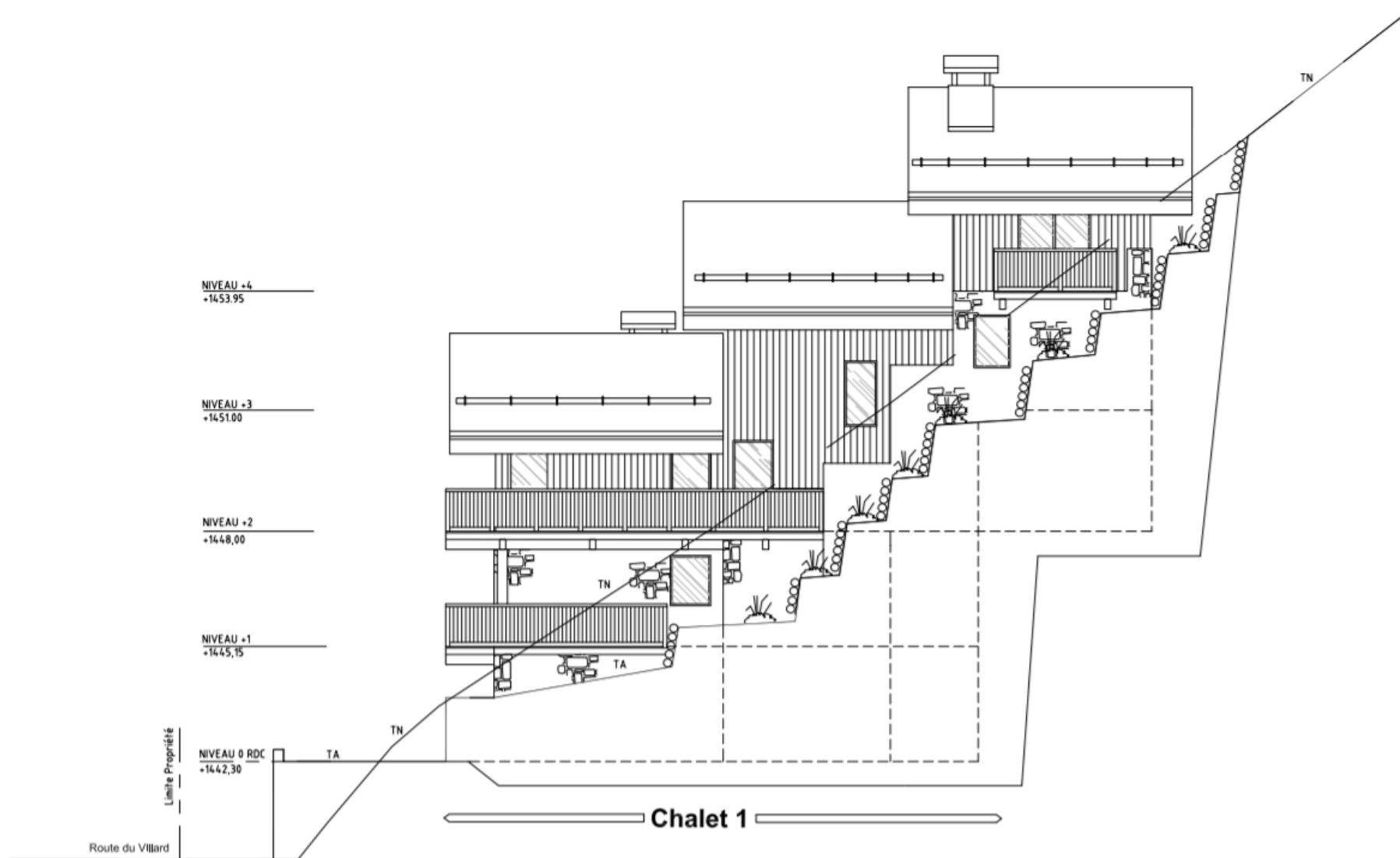
PLAN

FACADE OUEAST



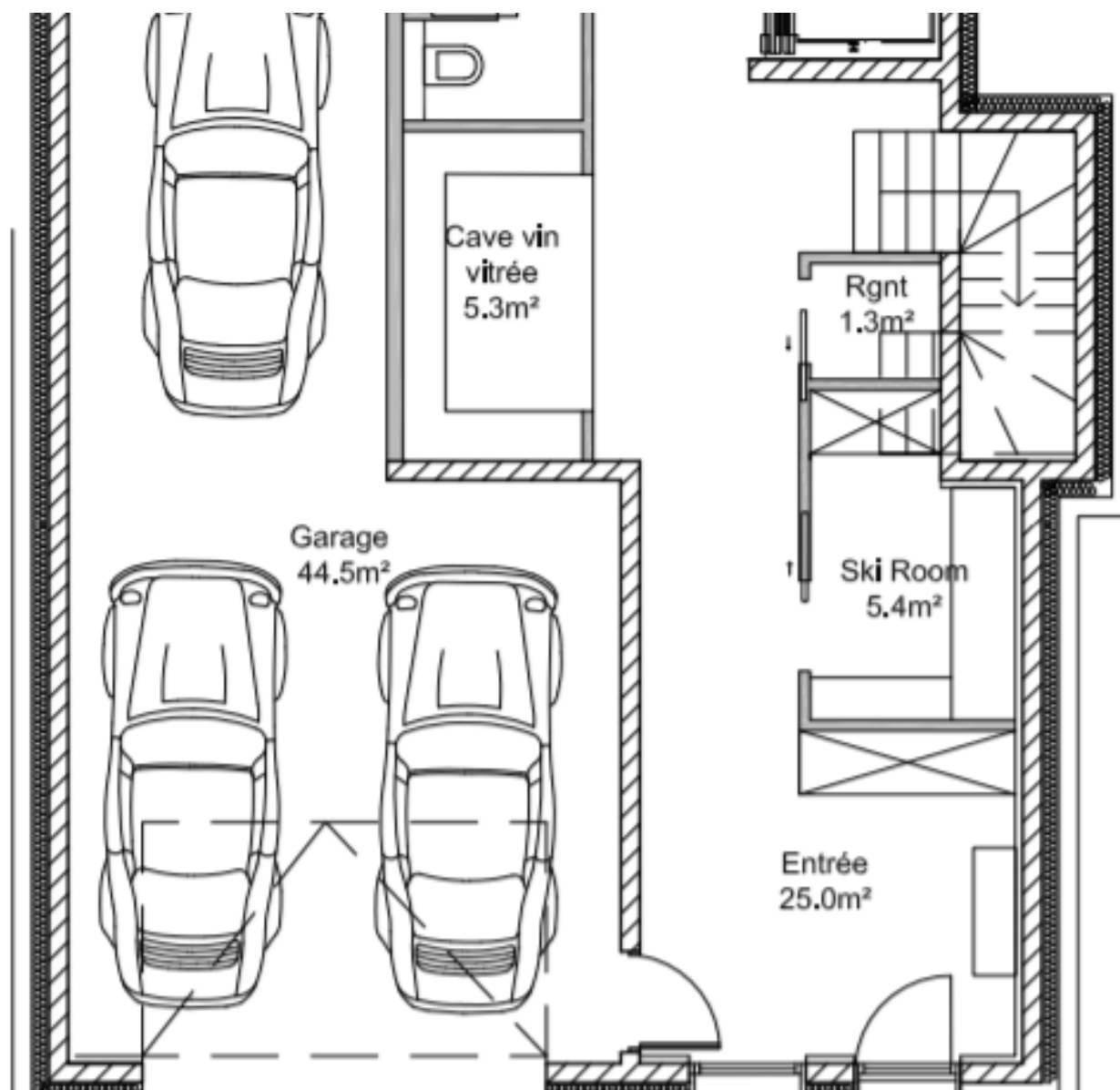
PLAN

FACADE SOUTH



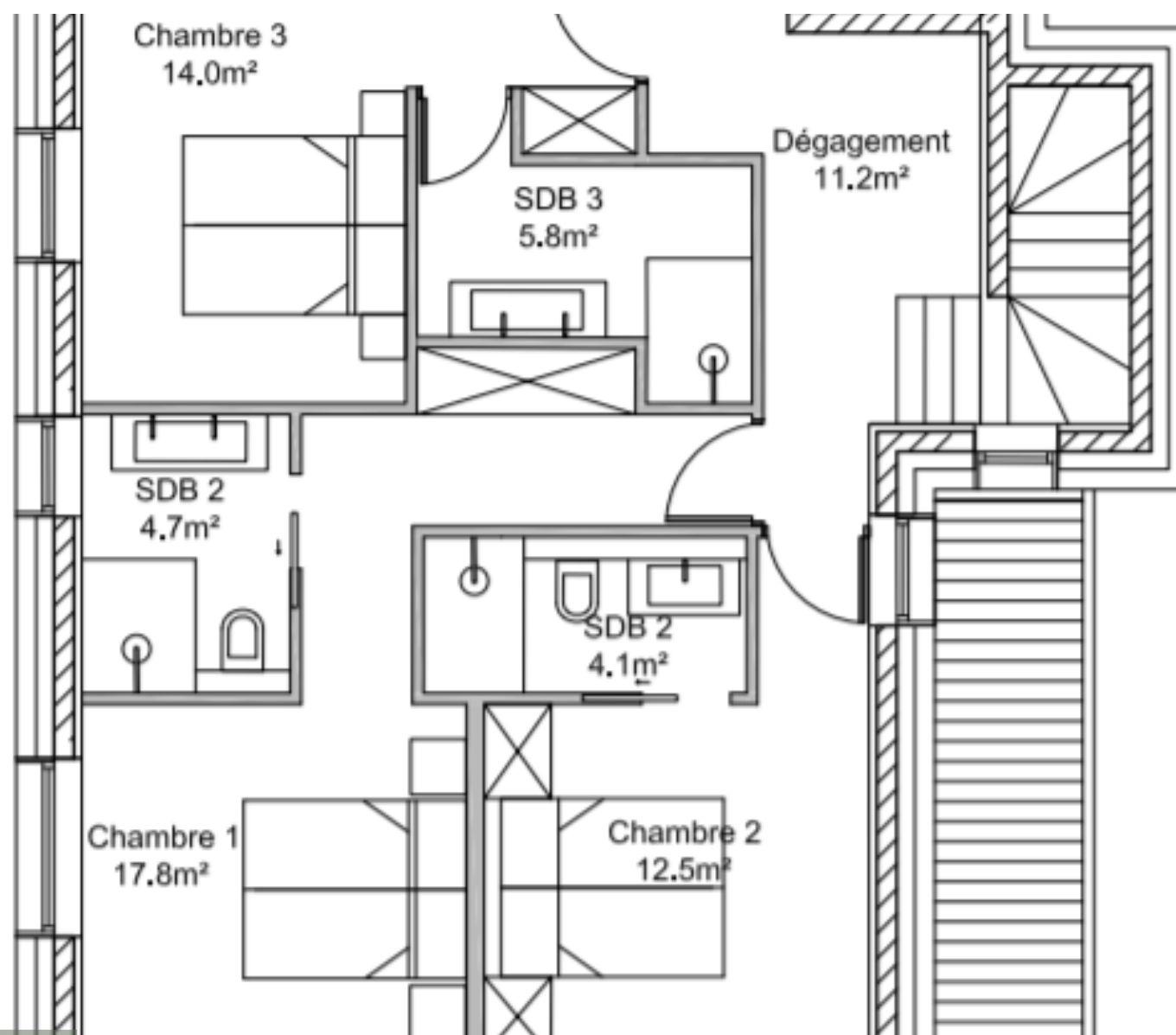
PLAN

GROUND FLOOR



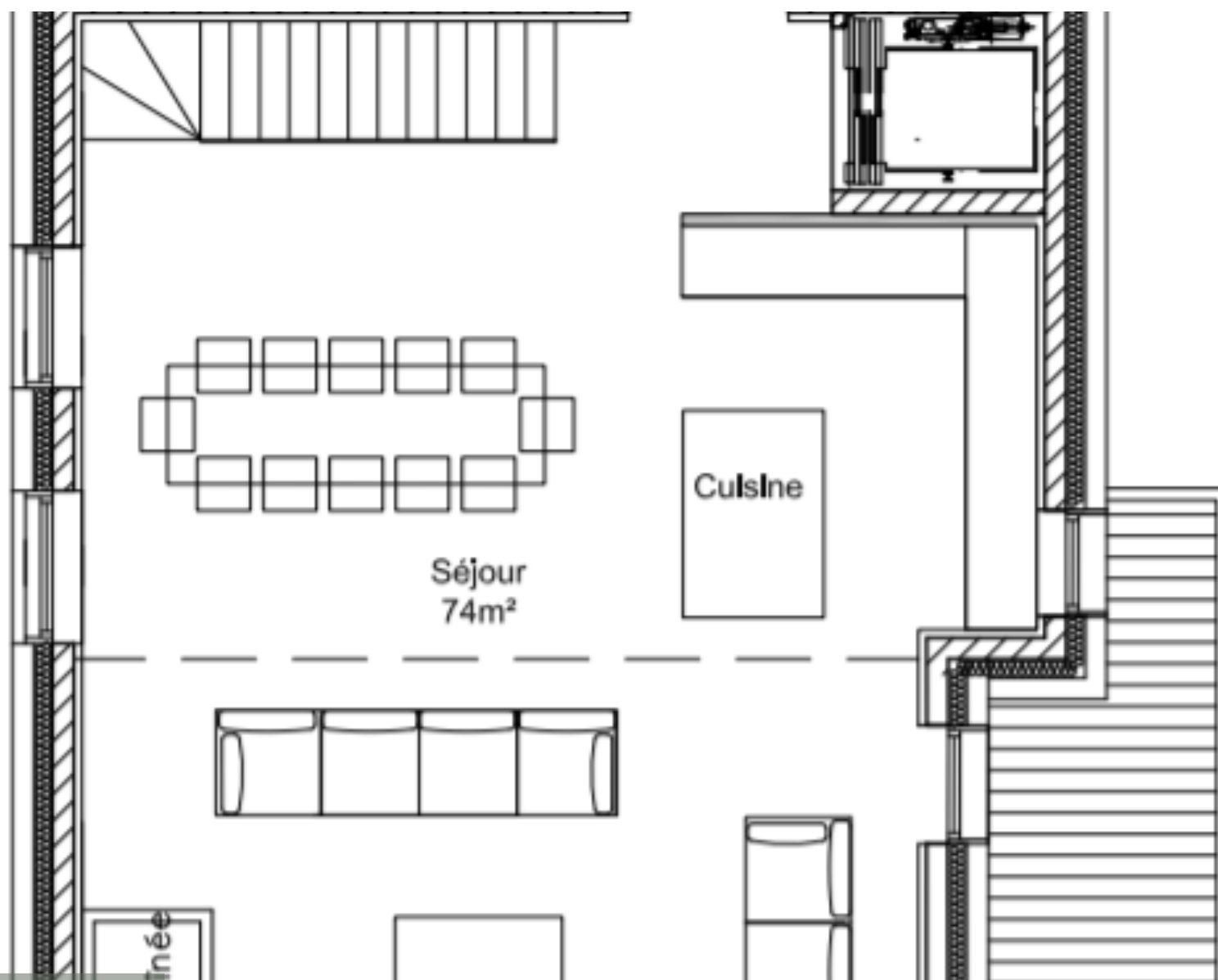
PLAN

LEVEL N+1



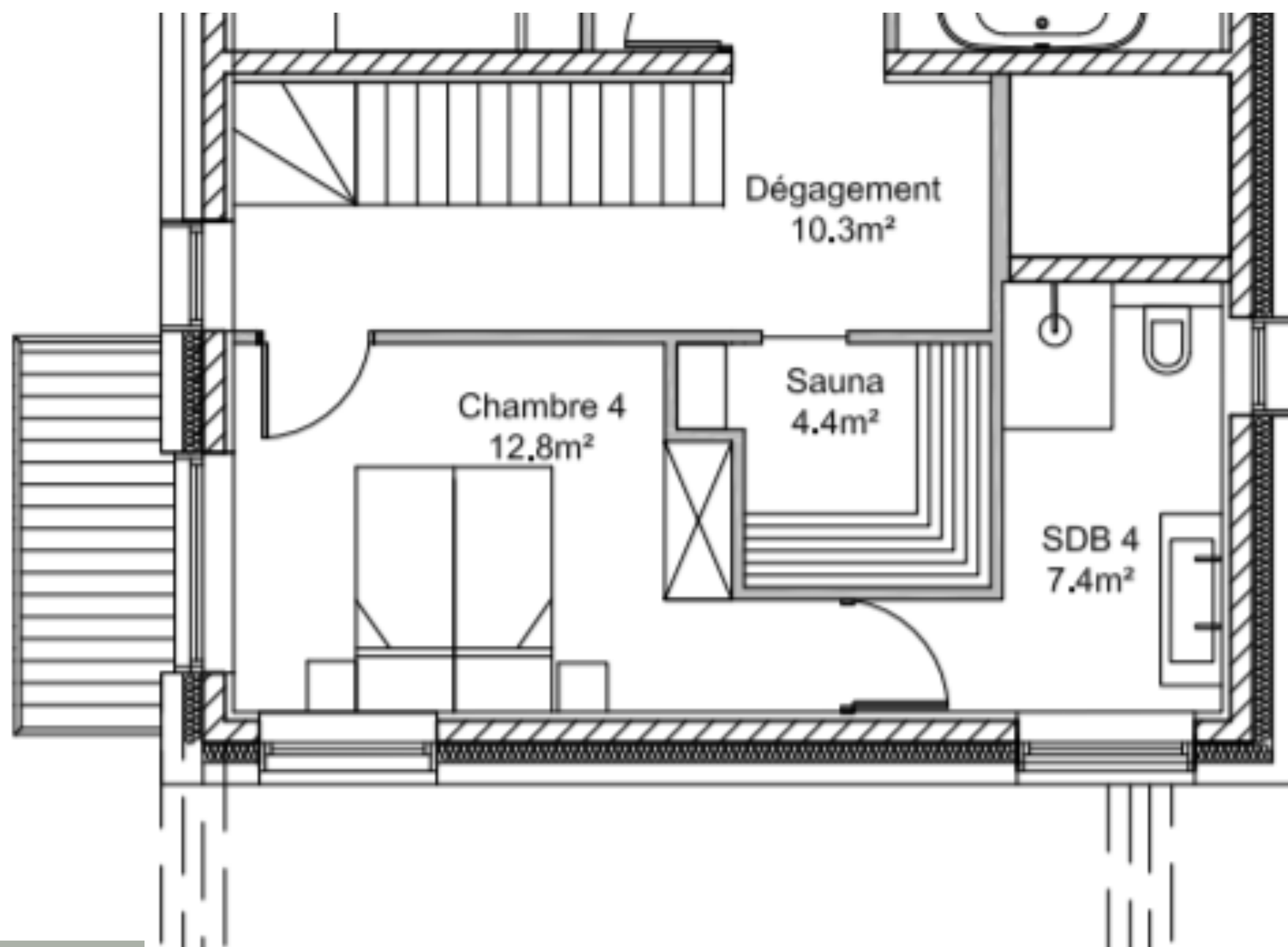
PLAN

LEVEL N+2



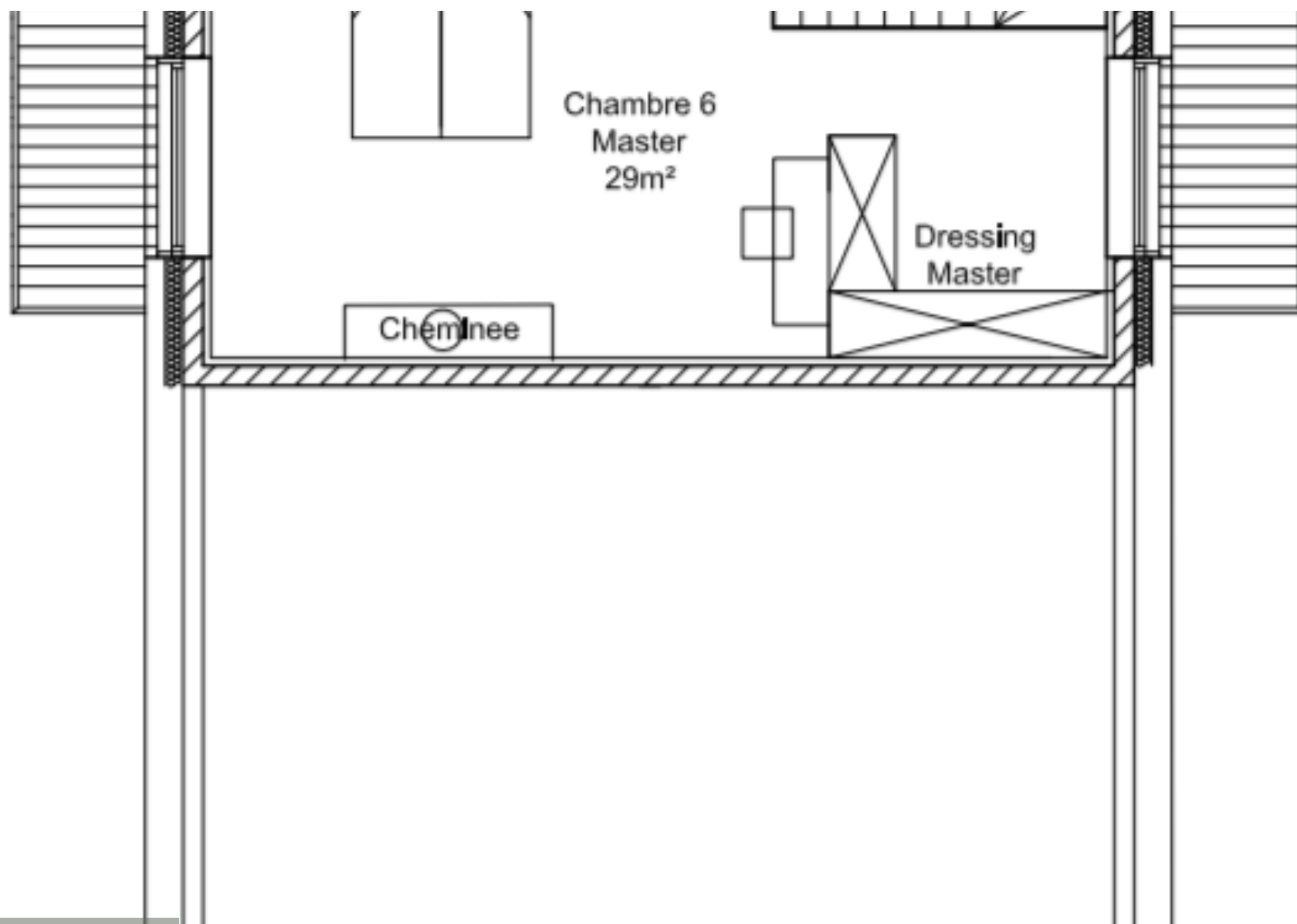
PLAN

LEVEL N+3



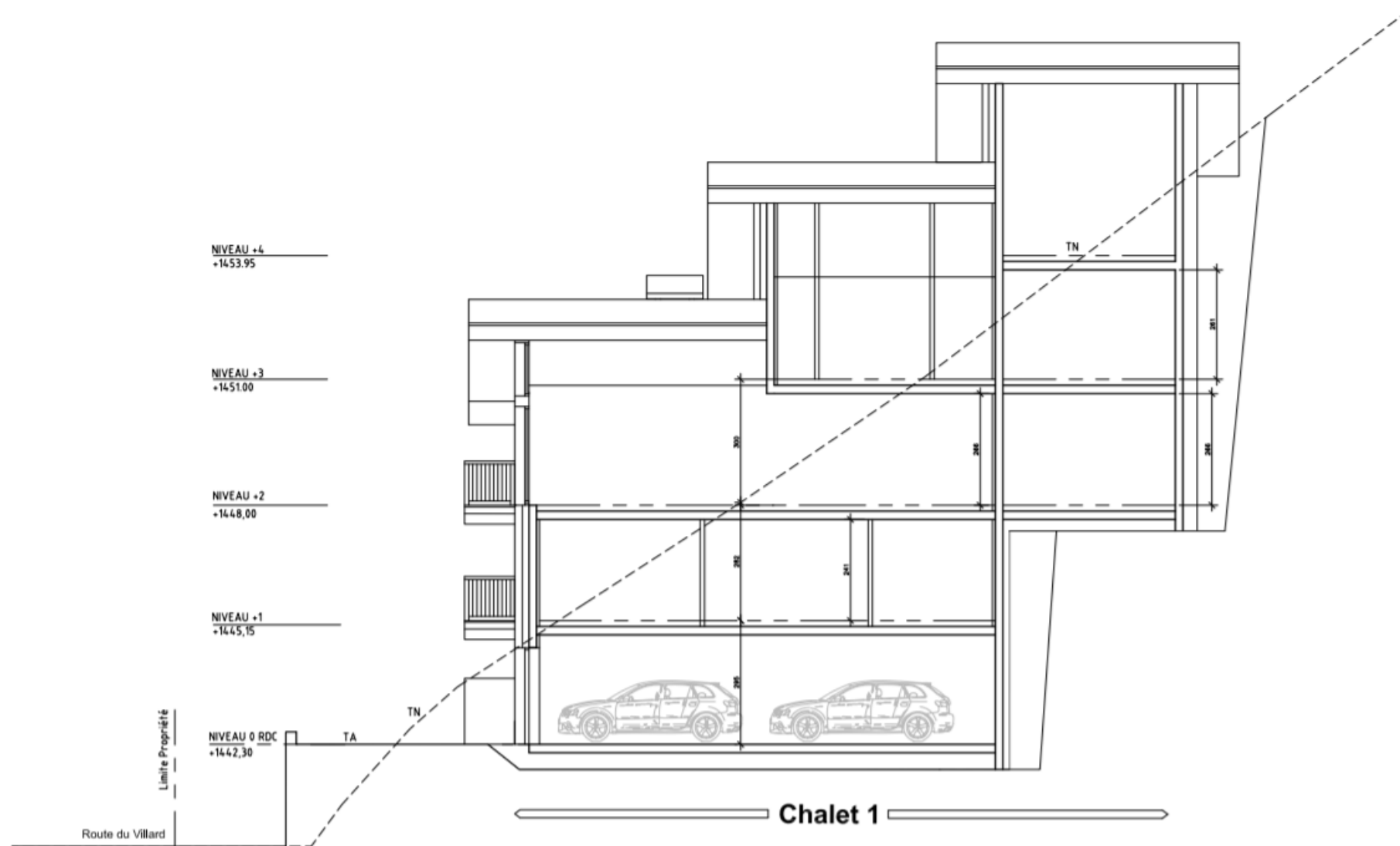
PLAN

LEVEL N+4



PLAN

CROSS-SECTION



PLAN

























