



SPACIOUS 3 BEDROOM APARTMENT WITH DORMITORY - LA
CHARPENTERIE · LA ROSIÈRE



SPACIOUS 3 BEDROOM APARTMENT WITH DORMITORY - LA CHARPENTERIE

Réf : CHPT-001

This 3 room apartment with dormitory can accommodate 6 people in optimal comfort and high quality services.

It is composed of a large living room, an equipped kitchen, 2 double bedrooms, a dormitory, two bathrooms, two independent toilets and a shower room.

You will appreciate the location of the apartment, close to the snow front, but also in the heart of the resort center and its amenities.



1 290 000€

Fees charged to seller

Non-contractual document.

The information illustrating the advertisements relating to the properties and their surroundings (descriptions, photographs, surface areas, points of interest, etc.) is provided for information purposes only, without any guarantee of completeness or accuracy.



LAYOUT

- △ An entrance
- △ A living room
- △ Kitchen
- △ Two double rooms
- △ A dormitory
- △ Two bathroom
- △ One shower rooms

ANNEXES

- △ Covered parking space
- △ Ski locker
- △ Cellar



106.9m²



2



2



1



KEY POINTS

- △ Views
- △ High-end service
- △ Exposure

AMENITIES



Elevator



Cellar



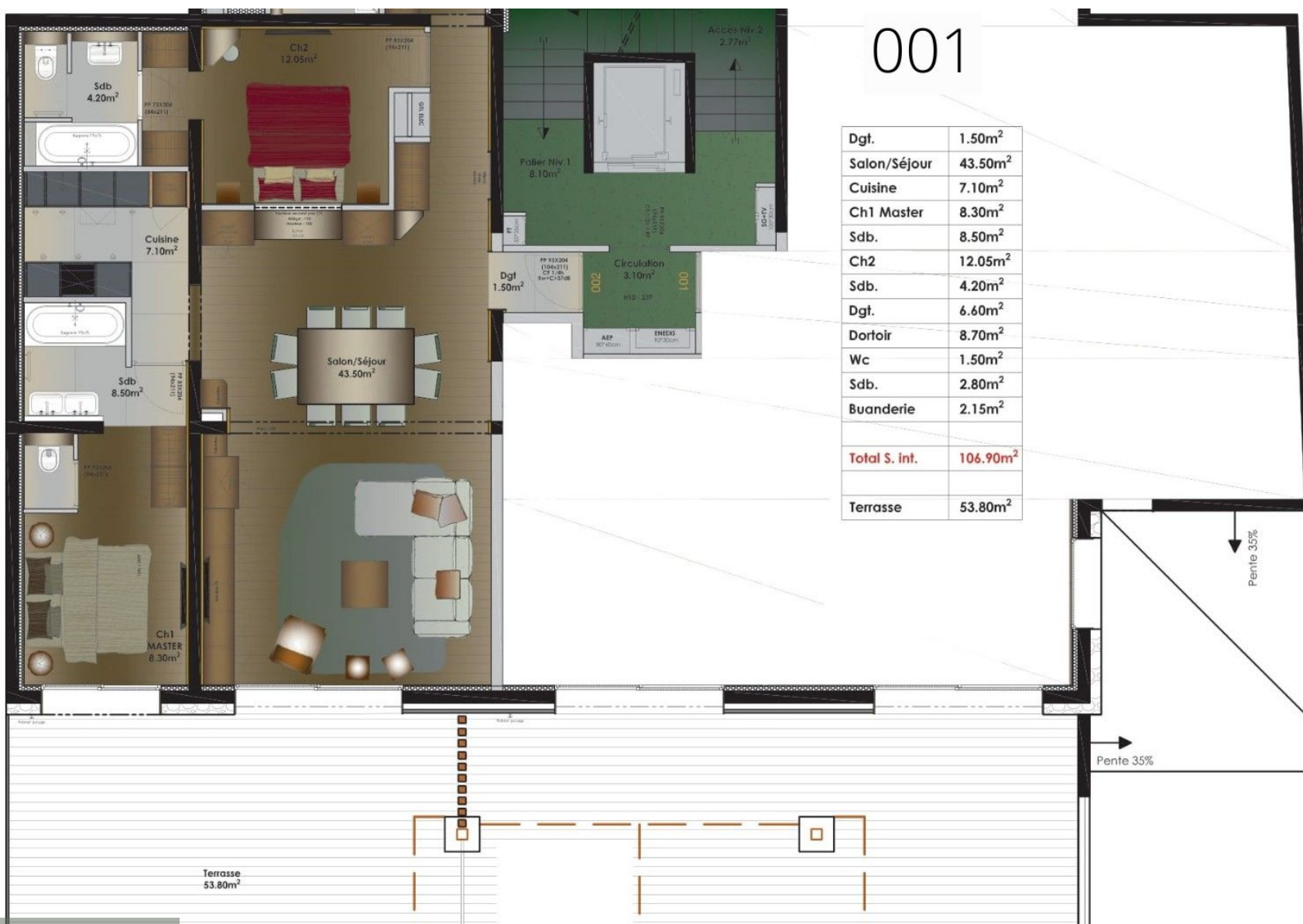
Terrace



Ski cellar



LOCATION



PLAN











