



**SUPERB 3 BEDROOMS APARTMENT IN THE NEW PROGRAMME LES
FERMES DE L'ALPE · ALPE D'HUEZ**



SUPERB 3 BEDROOMS APARTMENT IN THE NEW PROGRAMME LES FERMES DE L'ALPE

Réf : 2351-C301

Among the 60 lots in the programme there are no less than 12 3 bedrooms with a living area ranging from 85 to 121 sq. m, this one is 108 sq. m. When you enter the property you will directly access the living room equipped with its open kitchen, we have here a spacious and very bright room thanks to its large balcony of almost 15 sq. m. There is also the first and largest double bedroom with its own shower room. In order to accommodate 4 more people there are of course 2 more double bedrooms, one of which has its own dressing room.

Ski locker included.



1 279 500€

Recover the VAT of your investment. Please contact us to request the VAT amount.

Fees charged to seller

Non-contractual document.

The information illustrating the advertisements relating to the properties and their surroundings (descriptions, photographs, surface areas, points of interest, etc.) is provided for information purposes only, without any guarantee of completeness or accuracy.



LAYOUT

- △ Entrance
- △ Living room
- △ Open fitted kitchen
- △ Balcony
- △ 1 double bedroom ensuite
- △ 1 bathroom
- △ 1 double bedroom with dressing room
- △ 1 double bedroom
- △ 2 independent toilets

ANNEXES

- △ Ski locker



108.83m²



3



1



1



KEY POINTS

- △ Exceptional location
- △ High quality materials
- △ High-end services

AMENITIES



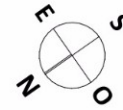
Elevator



Balcony



LOCATION



LES FERMES DE L'ALPE

L'Alpe d'Huez

Avenue de l'Ecluse

4 PIECES
Bâtiment C - **C301** - niveau 3

Entrée	3,80
Séjour/Cuisine	45,78
Chambre 1	14,48
Chambre 2	9,50
Chambre 3	11,76
Dress.	1,96
Dgt	4,35
SdB	6,16
SdE	2,33
WC 1	3,16
WC 2	2,30
Bnd	2,89

Surface Habitable Totale 108,47 m²

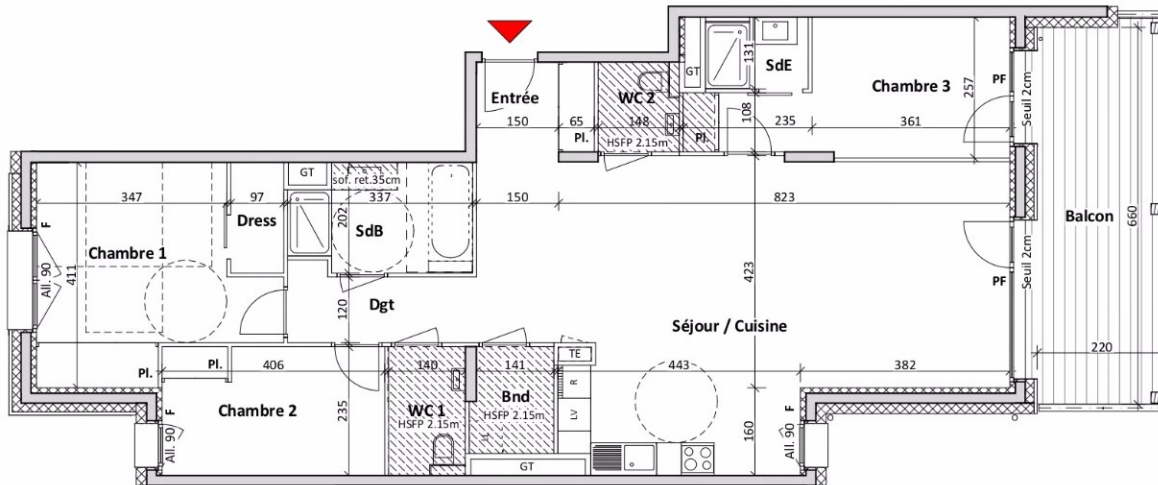
Balcon 15,44

Plan de repérage - niveau 3



TE - Tableau électrique
GT - Gaine technique
PI - Placard
PF - Porte-fenêtre
F - Fenêtre
Soffite / Faux-plafond hauteur libre 2.20m

21/02/2020



Les surfaces, côtes, gaines, rebords, soffites et faux-plafonds ainsi que l'emplacement des sanitaires ne sont pas tous figurés ou le sont à titre indicatif. Des modifications sont susceptibles d'être

0 00 1 14 2

PLAN











